

# MAXIMUM<sup>®</sup>

## PRESSURE WASHER



model no. 039-8066-6 (UG02)

### IMPORTANT:

Please read this manual carefully before using this pressure washer and save it for reference.

## INSTRUCTION MANUAL

version no. 04



## TABLE OF CONTENTS

TECHNICAL SPECIFICATIONS	4
SAFETY ADVICE	5
PARTS LIST	14
ASSEMBLY	16
ENGINE OPERATION	19
USING DETERGENT	25
OPERATION	27
MAINTENANCE	29
TROUBLESHOOTING	36
WARRANTY	39

**NOTE:** If any parts are missing or damaged, or if you have any questions, please call our toll-free helpline at 1-888-670-6682.



### SAVE THESE INSTRUCTIONS

This manual contains important safety and operating instructions. Read all instructions and follow them with use of this product.





# IMPORTANT, RETAIN FOR FUTURE REFERENCE AND READ CAREFULLY!

- Do not attempt to install or operate this device until you have read the safety instructions in this manual. Safety items throughout this manual are labelled with **Danger**, **Warning**, or **Caution** depending on the risk type.
- Read and understand the operating manual and labels on the product. Familiarize yourself with the product applications and limitations and the specific potential hazards. Know the controls and their proper use. It is important to know how to stop the product and disengage the controls quickly.

## DEFINITIONS



This is the safety alert symbol. It is used to alert you to potential personal injury hazards. Obey all safety messages that follow this symbol to avoid possible injury or death.



### DANGER!

Indicates an imminently hazardous situation which, if not avoided, will result in death or serious injury.



### FLAMMABLE AND COMBUSTIBLE MATERIALS

Alerts against the presence of materials/gases which can be extremely flammable.



### CAUTION!

Indicates a potentially hazardous situation which, if not avoided, could result in minor or moderate injury.



### POISONOUS

Alerts against materials/gases which are very poisonous and can cause serious bodily harm or even death.



### WARNING!

Indicates a potentially hazardous situation which, if not avoided, could result in death or serious injury.



### TOXIC GASES

Alerts against possible toxic gases which can be harmful to your health or deadly if you are exposed to them.

**IMPORTANT:** Installation, operation, or maintenance information which is important but not hazard-related.



model no. 039-8066-6 (UG02) | contact us 1-888-670-6682

### **DANGER — WORK AREA SAFETY AND EXHAUST FUMES**

- Keep work area clean and well lit. Cluttered and dark areas incite accidents.
- Operate the product in a clean, dry and well-ventilated area.
- Do not operate the product in explosive atmospheres, such as in the presence of flammable liquids gases or dust. Power tools create sparks which may ignite the dust or fumes.
- Never operate the product on a steep slope.
- Keep children, pets, and bystanders away from the operating area. Breathing exhaust fumes can cause serious injury or even death.
- Never start or run the engine indoors. The exhaust fumes are dangerous, containing carbon monoxide, an odourless and deadly gas. Operate this product only in a well-ventilated outdoor area.

### **WARNING — INADEQUATE VENTILATION**

- Materials placed against or near the product, or operating the product in areas where the ambient temperature exceeds 40°C (104°F) (such as storage rooms or garages) can interfere with its proper ventilation features, causing overheating and possible ignition of the materials or buildings.
- Operate the product in a clean, dry, and well-ventilated area at least 6 1/2' (2 m) away from any buildings, objects, or walls.
- **NEVER OPERATE THIS PRODUCT INDOORS OR IN POORLY VENTILATED AREAS.**

### **IMPORTANT!**

**Never operate this product under the following conditions:**

- If a noticeable change occurs in the engine speed.
- If the engine misfires.
- If there are flames or smoke in the area.
- If there are excessive vibrations.



### **DANGER!**

Read all safety warnings and all instructions. Failure to follow the warnings and instructions may result in fire and/or serious injury.

**GASOLINE ENGINES PRODUCE TOXIC CARBON MONOXIDE EXHAUST FUMES. BREATHING CARBON MONOXIDE CAN CAUSE NAUSEA, FAINTING, OR DEATH.**

**WARNING — PERSONAL SAFETY**

- Stay alert, watch what you are doing, and use common sense when operating a pressure washer. Do not use a pressure washer while you are tired or under the influence of drugs, alcohol, or medication. A moment of inattention while operating a pressure washer may result in serious personal injury.
- Use safety equipment. Always wear eye protection. Protective equipment such as a dust mask, non-skid safety shoes, a hard hat, or hearing protection used for appropriate conditions will reduce personal injuries.
- Do not use the product if the engine's switch does not turn it on or off. Any gasoline powered product that cannot be controlled with the engine switch is dangerous and must be repaired.
- Remove any adjusting key or wrench before starting the pressure washer. A wrench or a key left attached to a rotating part of the pressure washer may result in personal injury.
- Do not overreach. Do not operate the product while barefoot or when wearing sandals or similar lightweight footwear. Wear protective footwear that will protect your feet and improve your footing on slippery surfaces. Do not stand on the product. Keep proper footing and balance at all times. This enables better control of the product in unexpected situations.
- Dress properly. Do not wear loose clothing or jewellery. Keep your hair, clothing, and gloves away from moving parts. Loose clothes, jewellery, or long hair can get caught in moving parts.
- Do not place your hands or feet near moving parts.
- Do not use while on a ladder.

**CAUTION — HOT ENGINE AND MUFFLER**

**THE ENGINE AND MUFFLER BECOME  
VERY HOT DURING AND AFTER USE.  
AVOID TOUCHING THE ENGINE OR  
THE MUFFLER DURING OR AFTER USE.**



model no. 039-8066-6 (UG02) | contact us 1-888-670-6682

## FLAMMABLE AND POISONOUS MATERIALS

- Gasoline is highly flammable and its vapours can explode if ignited. Take precautions when using fuel to reduce the chance of serious personal injury.
- When refilling or draining the fuel tank, use an approved fuel storage container while in a clean, well-ventilated outdoor area.
- Do not smoke or allow sparks, open flames, or other sources of ignition near the area while adding fuel or operating the product. Never fill fuel tank indoors.
- Equip the operating area with a fire extinguisher certified to handle gasoline or fuel fires.
- Keep grounded conductive objects, such as tools, away from exposed, live electrical parts and connections to avoid sparking or arcing. These events could ignite fumes or vapours.
- Always stop the engine and allow it to cool before filling the fuel tank. Never remove the cap of the fuel tank or add fuel while the engine is running or when the engine is hot. Do not operate the product with known leaks in the fuel system.
- Loosen the fuel tank cap slowly to relieve any pressure in the tank.
- Replace fuel tank and container caps securely and wipe up spilled fuel. Never operate the product without both caps securely in place.
- Avoid creating a source of ignition for spilled fuel. If fuel is spilled, do not attempt to start the engine near spill. Move the product away from the area of spillage and avoid creating any source of ignition until fuel vapours have dissipated.
- Store fuel in containers specifically designed and approved for this purpose.
- Store fuel in a cool, well-ventilated area, safely away from sparks, open flames, or other sources of ignition.
- Never store fuel or product with fuel in the tank inside a building where fumes may reach a spark, open flame, or any other source of ignition, such as a water heater, furnace, clothes dryer, or the like. Allow the engine to cool before storing indoors.

## CAUTION — ENGINE SAFETY

- Certain components in this product and its related accessories contain chemicals which are known to cause cancer, birth defects, or other reproductive harm. Wash hands after handling.
- The engine exhaust from this product contains chemicals which are known to cause cancer, birth defects, or other reproductive harm.
- Check fuel lines, tank, cap, and fittings frequently for cracks or leaks. Replace if necessary.







- This engine was shipped without oil. Before you start the engine, make sure you add oil according to the instructions in this manual. If you start the engine without oil, it will be damaged beyond repair and will not be covered under the warranty.
- When starting engine ensure that spark plug, muffler, fuel cap and air filter are in place and secured.
- Do not crank engine with spark plug removed.
- If engine floods, move the throttle control to fast position and crank until engine starts.
- When operating the engine do not tip engine or equipment at an angle which will cause fuel to spill.
- Do not choke the carburetor to stop the engine.
- Never start or run the engine with the air cleaner assembly or the air filter removed.
- Transport or move the product only with empty fuel tank.
- Rapid retraction of starter cord (kickback) will pull hand and arm towards engine faster than you can let go. Risk of injury – broken bones, fractures, bruises, or sprains could result.
- Keep the engine and muffler free of grass, leaves, excessive grease, or carbon build-up to reduce the chance of a fire hazard.
- Do not tamper with any part of the engine to increase its speed.
- If the product makes an unusual noise or vibration, immediately shut off the engine, disconnect the spark plug wire, and check for the cause. Unusual noise or vibration is generally a sign of a problem.
- Use only attachments and accessories approved by the manufacturer. Failure to do so can result in personal injury.

### **CAUTION — SPECIFIC SAFETY ADVICE**

- Avoid dangerous conditions. Always operate this product on dry, solid and level ground.
- Never operate this product on slippery, wet, muddy, or icy surfaces. The operating area should be free from any obstructions. There should be plenty of room for handling, and the operator should stay alert at all times.
- Do not use this product in wet or damp areas or expose it to rain. Do not use it in areas where fumes from paint, solvents or flammable liquids pose a potential hazard.
- Inspect this product. Check before turning it on. Keep guards in place and in working order. Form a habit of checking to see that keys and adjusting wrenches are removed from tool area before turning it on.



## SAFETY ADVICE

- Replace damaged, missing or failed parts before using it. Make sure all nuts, bolts, screws, hydraulic fittings, hose clamps, etc., are securely tightened. Always check the oil level in the oil tank. Never operate this product when it needs to be repaired or when it is in poor mechanical condition.
- Never move or pull this product while spraying.
- Do not run the engine at a high speed when you are not using the product.
- **Risk of electric shock.** The water spray must never be directed towards any electric wiring, devices, or directly towards the pressure washer itself, or fatal electric shock may occur. 
- **Risk of injury.** Do not direct the water flow at people. The high-pressure jet can be dangerous if misused, and therefore must not be directed at people, animals, electrical devices or the unit itself. 
- **Risk of explosion.** When a combustible liquid is sprayed, there can be danger of fire or explosion, especially in a closed area. Therefore, do not spray flammable liquids. Do not use acids and solvents with this product either. These products can cause physical injuries to the operator and irreversible damage to the device.
- Learn how to stop the product and release the pressure quickly. Familiarize yourself with the controls.



## CAUTION — SPECIFIC SAFETY ADVICE

This product is capable of producing high pressure as rated in the **Technical Specifications**. To avoid rupture and injury, do not operate this product with components rated less than the unit itself (including but not limited to spray guns, hose, and hose connections).



## WARNING — INJECTION HAZARD

Equipment can cause serious injury if the spray penetrates the skin. Do not point the gun at anyone or any part of the body. In case of penetration, seek medical aid immediately.

**CAUTION — DETERGENTS**

This device has been designed for use with detergents that are specifically approved for pressure washer use. The use of other cleaning detergents may affect the operation of the device and void the warranty.

**CAUTION — SPRAY GUN**

The spray gun kicks back, so hold it with both hands. The trigger gun safety lock prevents the trigger from being engaged accidentally. However, the safety feature **DOES NOT** lock the trigger in the **ON** position.

**CAUTION — WATER CONNECTIONS**

- For use with fresh and clean water only. Do not use this product with other liquids.
- The water supply system must be protected against backflow.
- Never use this product with water contaminated with solvents (e.g., paint thinners, gasoline, oil, etc.)
- Always prevent debris from being drawn into the product by using a clean water source and an additional water filter, if required.
- If this device is connected to a potable water system, the system must be protected against backflow.
- Suitable water temperature: from 5 to 40°C (41 to 104°F).

**CAUTION — SERVICE**

- Before cleaning, repairing, inspecting, or adjusting, shut off the engine and make sure that all moving parts have stopped.
- Have your product serviced by certified repair personnel using only identical replacement parts. This ensures the safety of the product is maintained.
- Ensure proper maintenance. Check for misalignment or binding of moving parts, breakage of parts and other conditions that may affect the product's operation. If damaged, have the product repaired before use. Many accidents are caused by poorly maintained equipment.



model no. 039-8066-6 (UG02) | contact us 1-888-670-6682

### IMPORTANT — COLD WEATHER START

Do not operate this pressure washer in temperatures below 5°C (41°F). Operating pressure washer below 5°C (41°F) may cause damage to the pump and other pressure washer parts.

### IMPORTANT — SAFETY FEATURES

**Thermal Relief Valve:** Protects the pump from overheating in case the nozzle gets clogged. This system should not be abused. Make sure the pump does not overheat.

**Low-Oil Auto Shut-Off:** Protects the engine and prevents operating without proper lubrication. If the engine oil level goes below the recommended level, the pressure washer shuts off automatically.

### CAUTION — PREVENT PUMP DAMAGE

- Do not run the engine for more than 5 minutes without pressing the wand trigger or damage to the pump might occur.
- Never let the engine run unless the product is connected to a water supply. Ensure water is running through the pressure washer before attempting to start the engine.
- Never run caustic fluids or acid through this product.

### IMPORTANT — STORAGE

- Store the product in a well-ventilated area, with an empty fuel tank. Fuel should never be stored or placed near the product.
- When storing the product for winter, ensure that it is stored indoors (at room temperature), in a dry location away from any heat or ignition sources.
- If the product is to be stored with fuel in the fuel tank, add a fuel stabilizer (38-0907-6) to keep the gas from breaking down.
- To protect and extend the life of the product when storing it, use an antifreeze agent (039-8602-0) for the pump, which can be found at your local Canadian Tire store.

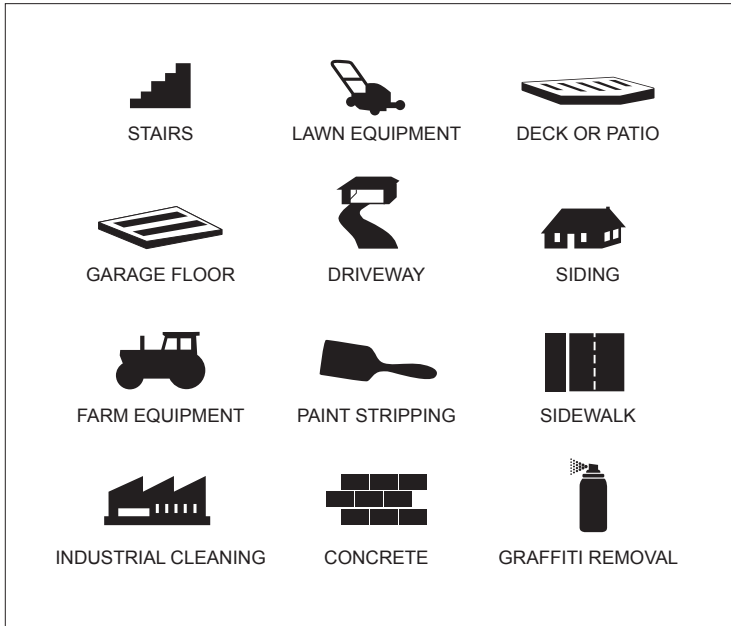


# MAXIMUM

# 13

## INTENDED APPLICATION

This product is designed for specific applications. Do not modify or use this product for any application other than the one it was designed for. Please refer to the icons below for suggested applications. For questions regarding other uses, please call us at **1-888-670-6682**.

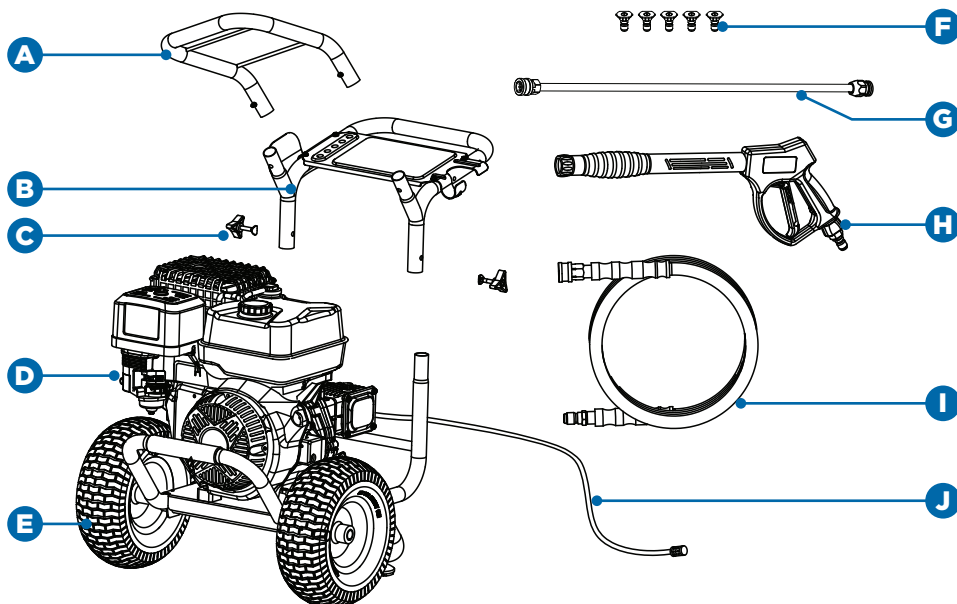


**SAFETY ADVICE**

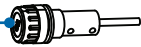
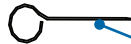
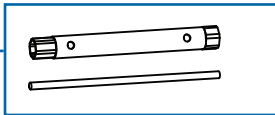


model no. 039-8066-6 (UG02) | contact us 1-888-670-6682

Item #	Part Name	Qty.	Part #
A	Main handle	1	UG02-301-0000
B	Sub-handle	1	UG02-302-0000
C	Lock knob	2 sets	UG02-000-1001
D	Main unit	1	UG02-000-1000
E	Wheel (comes pre-attached on the machine)	2	UG02-030-2000
F	Tips kit (5 pcs)	1 set	UG02-050-0003
G	Quick-connect wand	1	UG02-050-0002
H	Gun assembly	1	UG02-050-0001
I	Pressure hose	1	UG02-050-0004
J	Detergent injection tube	1	UG02-202-1000

**WARNING!**

Engine oil is not included. Always use oil type SAE 10W-30. Add oil to the engine before starting it.

**MAXIMUM****15****PARTS LIST****K****M****L****N**

Item #	Part Name	Qty.
K	Ventilation plug	1
L	Spark plug wrench	1 set
M	Engine oil funnel	1 set
N	Cleaning needle	1
N/A	Water filter (comes pre-attached on the machine)	1

**WARNING!**

- Remove the product and any accessories from the package. Make sure that all items listed in the packing list are included.
- Inspect the tool carefully to make sure no breakage or damage occurred during shipping.
- Do not discard the carton or any packaging material until all parts have been examined.



model no. 039-8066-6 (UG02) | contact us 1-888-670-6682

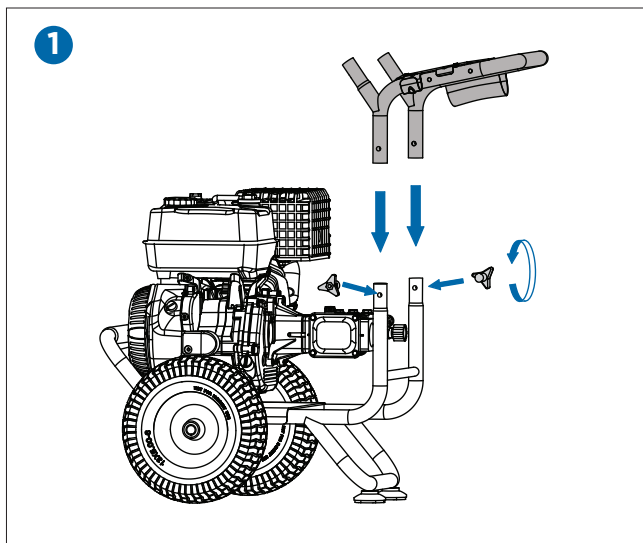
## SURFACE PREPARATION

Before beginning any cleaning task, it is important to inspect the area for objects that could create a hazard. Remove any objects from the work area that could be tripped over, such as toys or outdoor furniture. Ensure that all doors and windows are closed tightly.

## WATER SUPPLY (COLD WATER ONLY)

- The unit must be used with cold water supply only. The water hose must be at least 13 mm (1/2") in diameter.
- The water flow rate must not fall below 18 litres per minute LPM (4.8 gallons per minute GPM), or the pump might be damaged. The flow rate can be determined by running water for one minute into an empty container.
- The water supply temperature must not exceed 40°C (104°F)

## ASSEMBLY STEPS



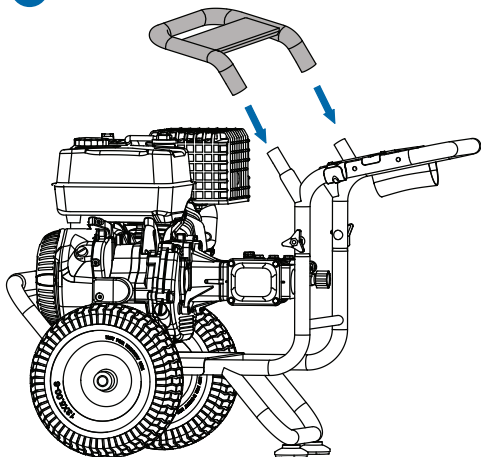
Install the sub-handle onto the cart, then fasten the sub-handle on the cart with the lock knob.



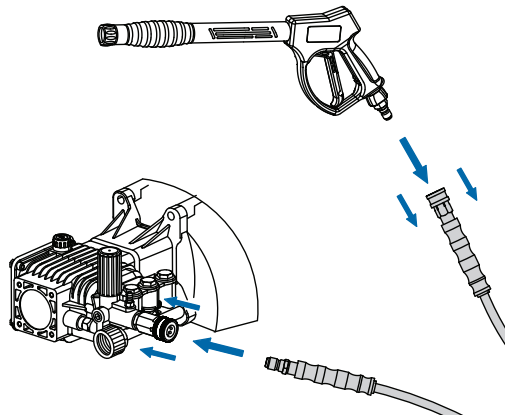
## WARNING! — INJECTION HAZARD

Pressure washer can cause serious injury if the spray penetrates the skin. Do not point the gun at anyone or any part of the body. In case of penetration, seek medical aid immediately.

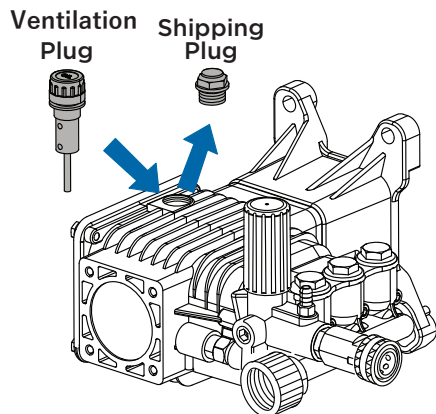


**MAXIMUM****17****ASSEMBLY****2**

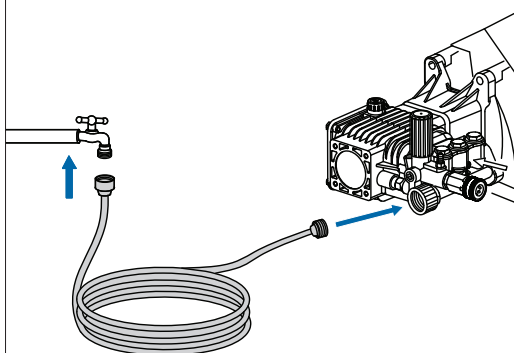
Attached main handle onto the sub-handle by pressing the pin on the shafts and align the pin to the hole on the receptacle.

**4**

Connect the pressure hoses to pump outlet and gun connector. When pressure hose is connected, pull hose between pump and gun to make sure it is secured.

**3**

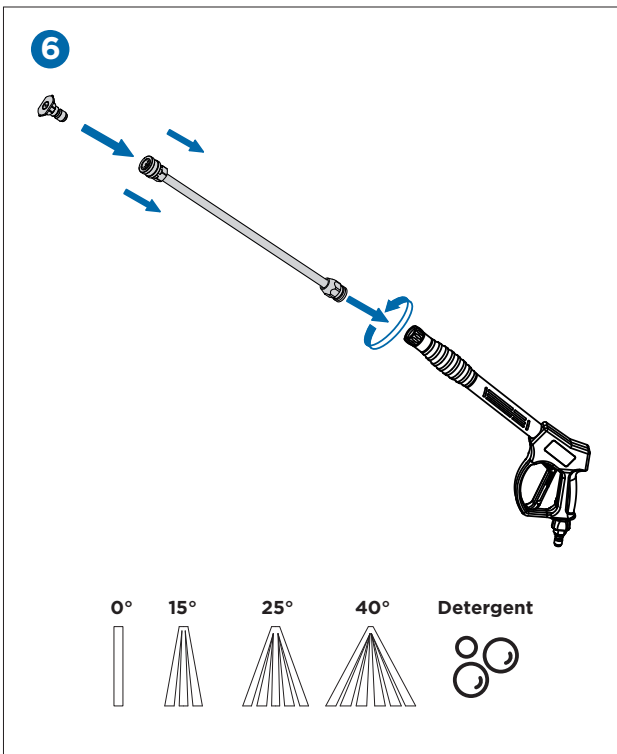
Remove the RED shipping plug from the pump and replace with the supplied ventilation plug.

**5**

Connect the garden hose to inlet adaptor and water supply. Turn the water on.



model no. 039-8066-6 (UG02) | contact us 1-888-670-6682



**SELECT THE DESIRED TIP BASED ON THE FOLLOWING PURPOSES:**

**0° (Red)**

Thin and powerful stream of water for difficult stains and debris removal.

**15° (Yellow)**

Thin-angled spray for detailed cleaning.

**25° (Green)**

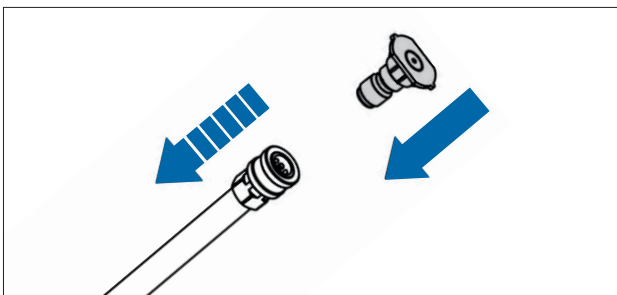
Medium-angled spray for detailed cleaning.

**40° (White)**

Large pattern for wider cleaning applications.

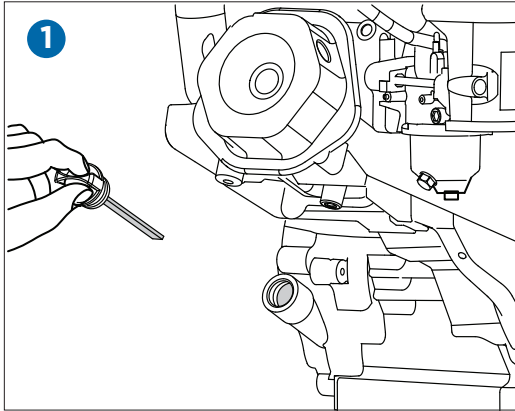
**Detergent (Black)**

This nozzle must be used when applying detergents with the on-board detergent injection system. Applies detergents in low pressure only.



To install tip, gently slide the collar back before inserting it, then release the collar to lock the tip.

## ADDING / CHECKING OIL

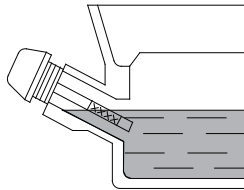


1. Remove oil tank dipstick and wipe it with a clean cloth.
2. Replace and retighten the dipstick.
3. Remove the dipstick again and check the oil level. It should be at the top of the full indicator on the dipstick.
4. If low, add oil slowly into the oil tank. Do not overfill. After adding oil, wait one minute and then recheck the oil level.
5. Replace and retighten the dipstick.

**TIP:** When adding oil use provided oil funnel.



**SAE 10W-30**

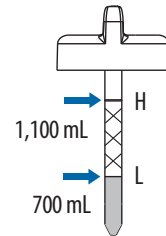


Engine Oil Reservoir Capacity: 1,100 mL

Engine will not start if oil level is below "L" oil level indicator.

Always check engine oil level before starting.

Engine oil level should be up to point of overflowing filler neck (1,100 mL).



## IMPORTANT:

Oil has been drained for shipping, add oil according to instructions. Engine will not start if oil level is below the LOWER level indicator.

Before each use:

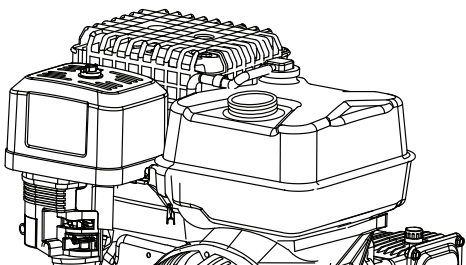
- Check the oil and fuel level and fill if necessary.
- Make sure that the spark plug, muffler, fuel cap, and air filter are in place and secured.
- Do not crank engine with spark plug removed.



## WARNING!

- Always check the oil level before starting the engine, making sure the pressure washer is on a level surface.
- Always use oil type **SAE 10W-30**, which can be found at your local **Canadian Tire** store (Product no. 28-9301-6).

2



Fuel Tank Capacity: 5.8 L

1. Stop the engine (→Stopping Engine) and let it cool at least 2 minutes before removing the fuel tank cap.
2. Clean the fuel cap area of dirt and debris. Remove the fuel tank cap and make sure the fuel filter is in place.
3. Fill the fuel tank with fuel. Never overfill the fuel tank. Fill tank to no more than 1/2" (13 mm) below the bottom of the filler neck to provide space for expansion caused by the engine heat. To allow for expansion of the fuel, do not fill above the bottom of the fuel tank neck.
4. Reinstall the fuel tank cap.

**WARNING!**

- Make sure there is enough fuel in the fuel tank before operating the pressure washer.
- Use only clean, fresh, unleaded fuel. Use a minimum of 87 octane/87 AKI (91 RON).
- Do not use old gas, and do not mix oil with gasoline.
- Fuel and its vapours are extremely flammable and explosive. Fire or explosion can cause severe burns or death.

**IMPORTANT!**

- Keep fuel away from sparks, open flames, pilot lights, heat, and other ignition sources.
- Check fuel hoses, tank, caps, and fittings for cracks or leaks. Replace if necessary.
- If fuel spills, wait until it evaporates before starting engine.
- Fill the tank outdoors or in well-ventilated area.

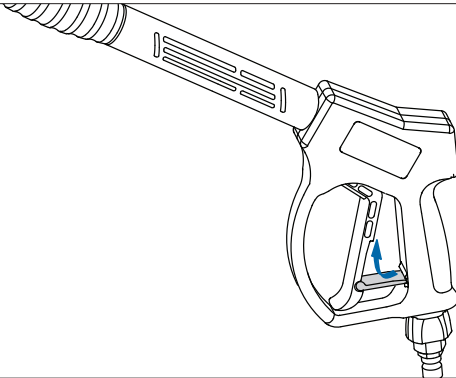


# MAXIMUM

# 21

## ENGINE OPERATION

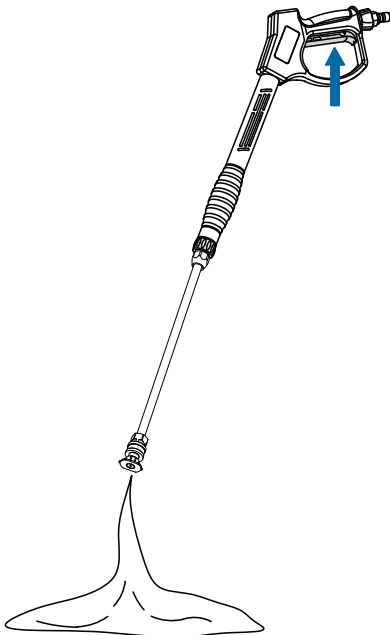
3



Release the safety trigger if it's locked.

4

### PURGING



Purge air by squeezing the trigger on the gun until there is a steady stream of water.



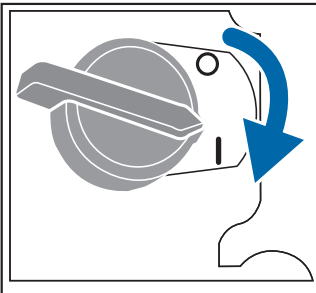
### WARNING! — DEPRESSURIZED

- Always check the oil level before starting the engine, making sure the pressure washer is on a level surface.
- Always use oil type **SAE 10W-30**, which can be found at your local **Canadian Tire** store (Product no. 28-9301-6).

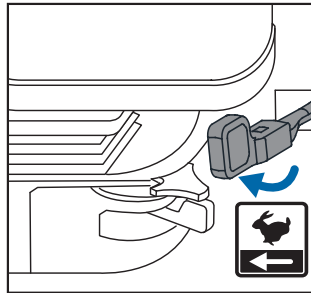


## STARTING ENGINE

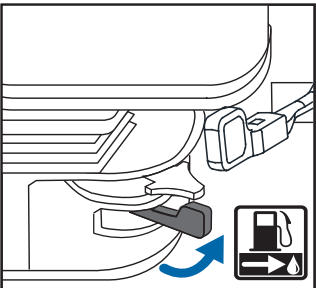
5



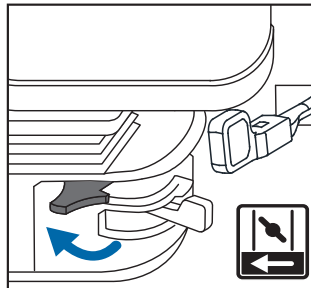
- a. Set the engine I/O switch to **ON (I)** position.



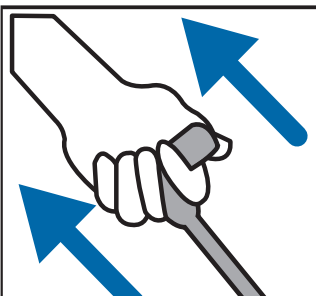
- b. Move the throttle control to **LEFT** position.



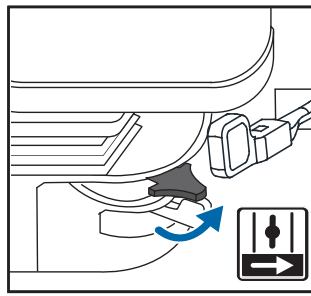
- c. Move the fuel valve to **RIGHT** position.



- d. Move the choke lever to **LEFT** position.



- e. Pull the recoil starter grip to start the engine.



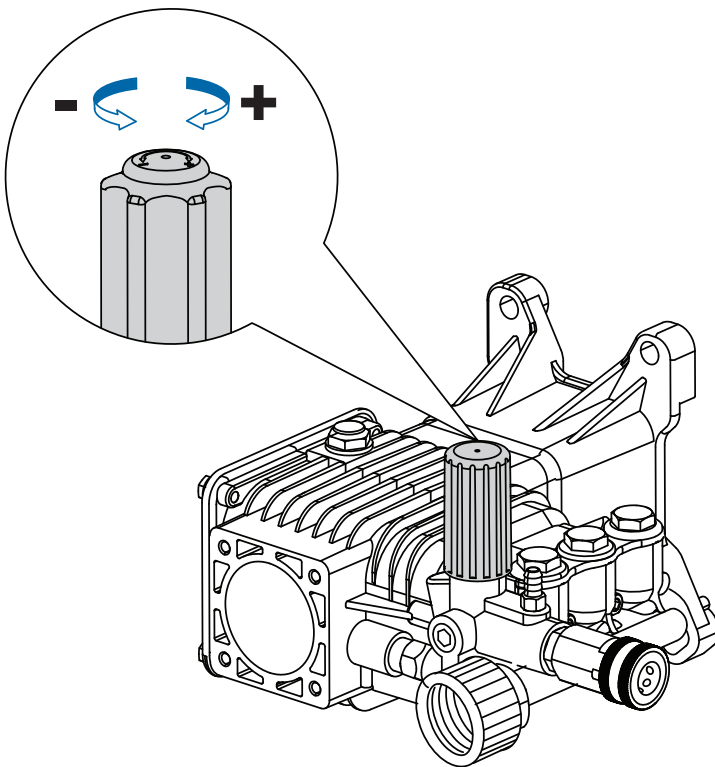
- f. Once engine starts up, move the choke lever to the **RIGHT** position.

**CAUTION!**

Press and hold the gun trigger while starting the engine.  
Return the recoil starter grip gently to its starting position to prevent damage to the starter or the housing.

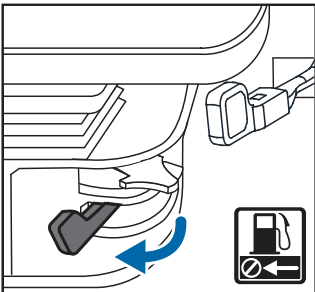
**IMPORTANT!**

Start engine in the hot environment, engine might not start successfully while choke lever at left position. Occurring this situation, choke lever could be adjusted to middle or right position before starting the engine.

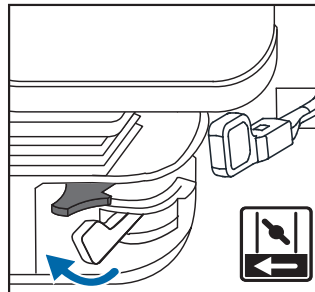
**PRESSURE ADJUSTMENT****6**

1. Rotate the regulator clockwise to increase the pressure.
2. Rotate the regulator counter-clockwise to decrease the pressure.

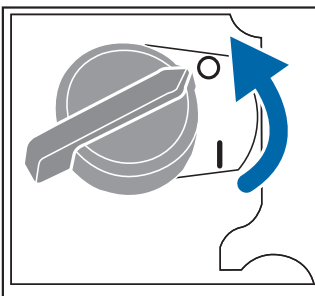


**STOPPING ENGINE****7**

a. Move the fuel valve to **LEFT** position



b. To stop the engine move the choke lever to the **LEFT** position.



c. Set the engine I/O switch to **OFF (O)** position.

**RESTARTING ENGINE**

Once engine is failed to start at the first trial, it is required to pull the gun trigger and release the remaining pressure before restart.

**IMPORTANT!**

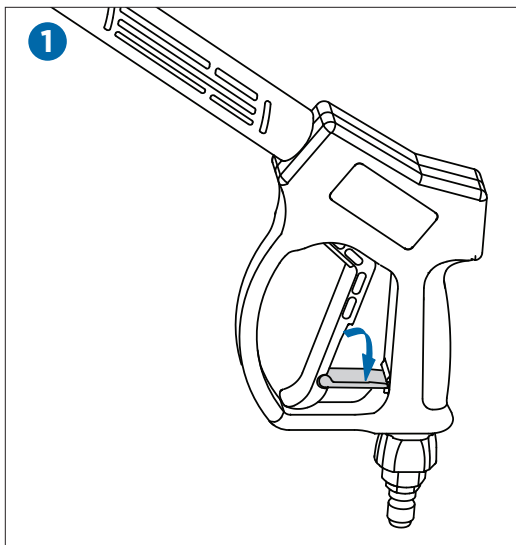
When restarting the engine after running it for over 5 minutes, place the choke lever to **RIGHT** position to restart the engine.



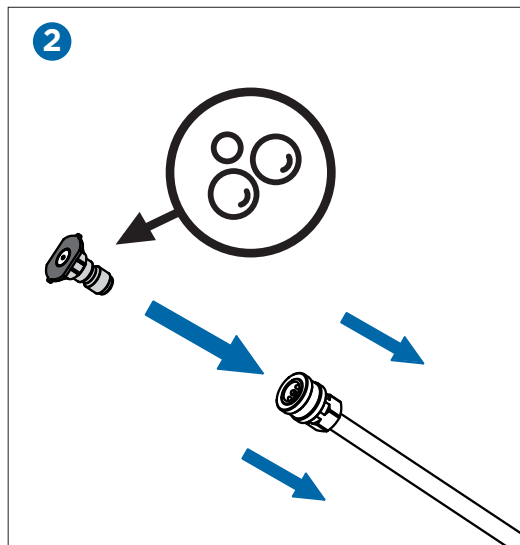


## CLEANING WITH DETERGENT INSTRUCTIONS

Working with a detergent ensures quick soaking of the dirt, and allows the high-pressure water to penetrate and remove the dirt more effectively. Always spray detergent on a **dry** surface, do not pre-soak the area. Wetting the surface first dilutes the detergent and reduces its cleaning ability.



Engage the safety locks on the spray gun.



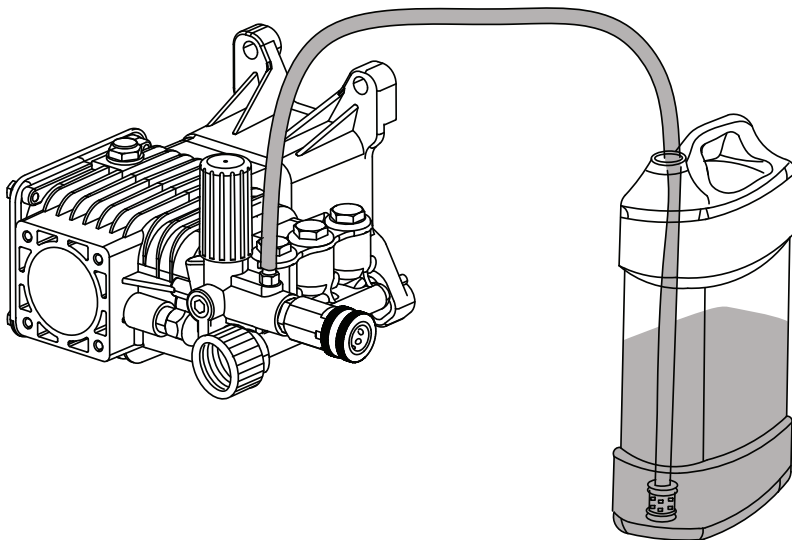
Insert the detergent (black) tip by gently sliding the collar back on the quick-connect wand before inserting the tip, then release the collar to lock the tip.

### IMPORTANT!

This pressure washer is intended for use with special pressure washer detergents only. Do not use powdered soaps, which would clog the injection system. Follow the detergent manufacturer's directions or call the MAXIMUM® toll-free number at 1-888-670-6682 if you have any questions or concerns.



3



1. Insert the detergent injection tube into any pressure washer detergent container of your choice. The pump will draw the detergent, mix it with the water automatically, and discharge it through the detergent nozzle at a low pressure.
2. Apply the detergent to a dry work surface from bottom to top.
3. Allow detergent to remain on the surface for a short time before rinsing. Do not allow detergent to dry on the surface.
4. Rinse with clean water under high pressure.
5. When you are finish working with detergent, place the siphon tube into a bottle with clean water and spray water for one minute to rinse the detergent injection tube and remove any soap residues that may clog it.

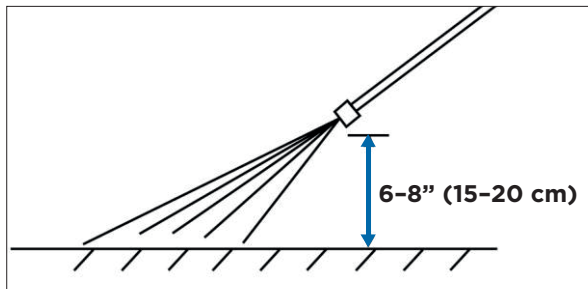
**WARNING!**

Damage may occur to painted surfaces if chemicals (detergents) are allowed to dry on them. Wash and rinse a small section at a time. Avoid working on hot surfaces or under direct sunlight.



### USING PRESSURE WASHER

1. Start the engine.
2. Install appropriate spray nozzle.
3. Release the trigger safety lock if it is locked.
4. Purge the air by squeezing the trigger on the gun until there is a steady stream of water.
5. Position the tip of the wand 15–20 cm (6–8") away from the surface to be cleaned, at an angle appropriate to the spray nozzle used (0°, 15°, 25° or 40°).



### SHUTTING DOWN AND CLEANING UP

1. **(Skip this step if you are not using detergent.)**  
After cleaning with detergent, fill the detergent tank with clean water. Spray water at a low pressure for one minute, so that all detergent is flushed out of the system.
2. Stop the engine.
3. Turn off the water supply and disconnect the water supply from the water inlet.
4. Pull the gun trigger to release any remaining water pressure.
5. Engage the trigger safety lock on the spray gun and rest the gun on lower and upper supports.



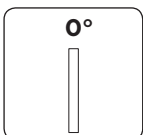
#### **WARNING!**

Turn off the water supply and pull the trigger to depressurize the unit. Failure to do so might result in personal injury due to discharge of pressurized water.

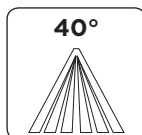


## USING SPRAY NOZZLE

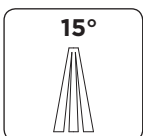
This pressure washer comes with 5 different nozzles that can be installed on the stainless steel wand. The spray pattern is adjusted by installing the appropriate spray nozzle.



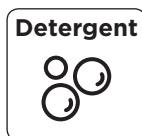
**0° (Red):**  
Thin and powerful stream of water for difficult stains and debris removal.



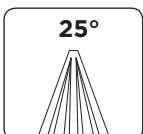
**40° (White):**  
Large pattern for wider cleaning applications.



**15° (Yellow):**  
Thin-angled spray for detailed cleaning.

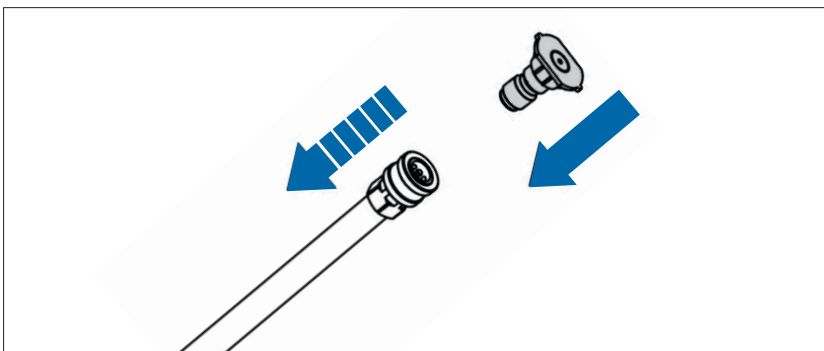


**Detergent (Black):**  
This nozzle must be used when applying detergents with the on-board detergent injection system. Applies detergents in low pressure only.



**25° (Green):**  
Medium-angled spray for detailed cleaning.

## INSTALLING SPRAY NOZZLE TO THE QUICK-CONNECT COUPLER

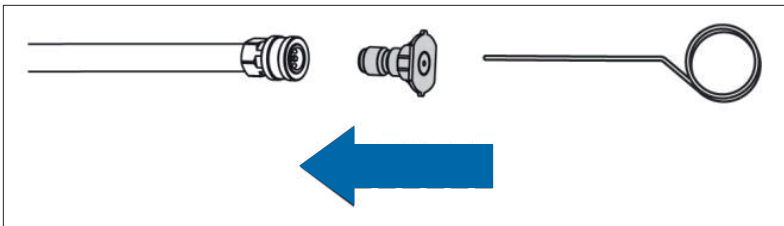


1. Pull the coupler ring back and insert the desired nozzle.
2. Release the coupler ring to lock it back in place.



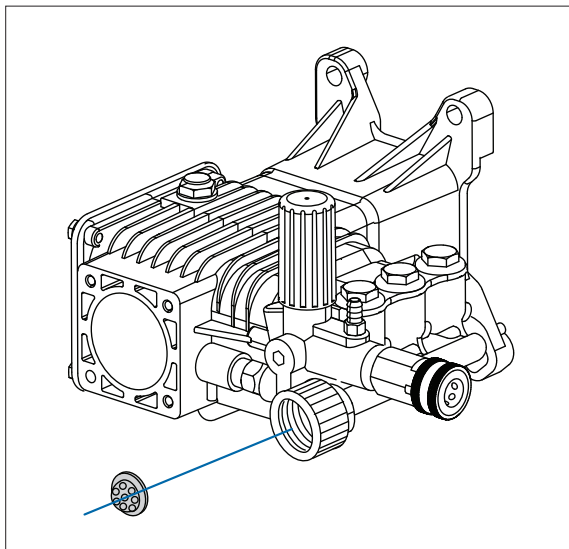
### CLEANING THE SPRAY TIPS

Clean the spray tip by carefully inserting the provided cleaning needle, or a thin, sharp object (e.g., paper clips) into the tip to remove deposits.



### CLEANING WATER INLET FILTER

- This pressure washer is equipped with a water inlet filter.
- The water inlet filter must be kept clean at all times, otherwise it can restrict the water flow to the pump unit and damage it.
- Remove and clean the water inlet filter.



### WARNING!

- Clogging of the spray tip increases the water pressure and might damage the pump unit.
- **DO NOT** operate this pressure washer without the water inlet filter in place, as deposits could build up internally and affect the functioning of the unit.



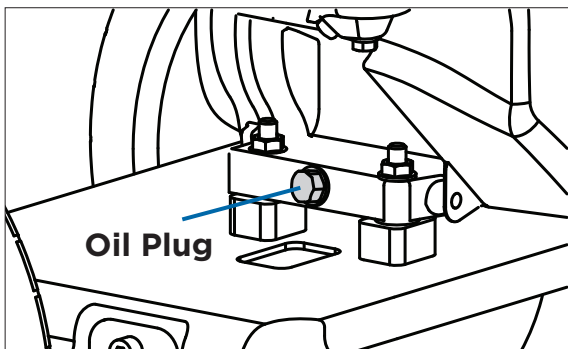
## ENGINE MAINTENANCE

### Draining Engine Oil:

The engine oil should be replaced after the first 20 hours of operation, or after the first month of use. After that, it should be replaced every 100 hours or every 6 months.

#### To Drain the Engine Oil:

1. Loosen the oil tank dipstick.
2. Place an oil container underneath the opening on the main frame.
3. Remove the oil plug and drain the oil.
4. Once the oil has been completely drained, retighten the hex screw and oil tank dipstick.



### Recommended Engine Oil

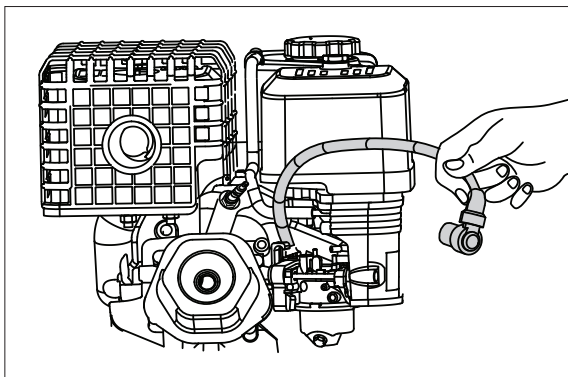
Add oil as described in > Adding/Checking Oil.

### Inspecting, Replacing or Cleaning the Spark Plug:

The spark plug should be checked every 100 hours of operation or every 6 months.

#### To Replace or Clean the Spark Plug:

1. Disconnect the spark plug wire by pulling it off the spark plug.

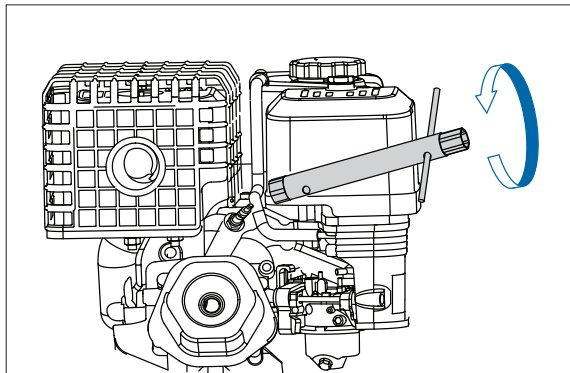




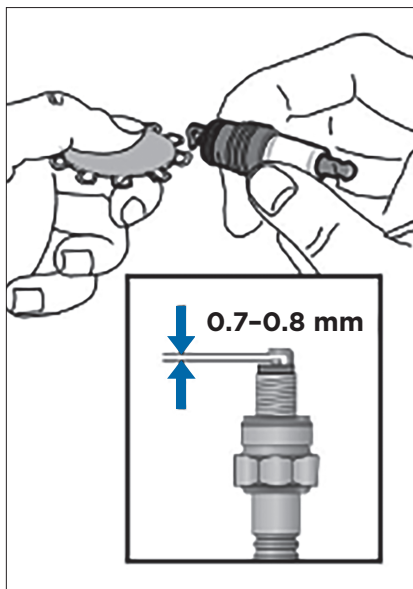
**MAXIMUM**

**31**

2. Using provided spark plug wrench, remove the spark plug by turning it counter-clockwise. If there is a carbon sediment build-up, remove it. If there is too much carbon sediment, replace the spark plug.



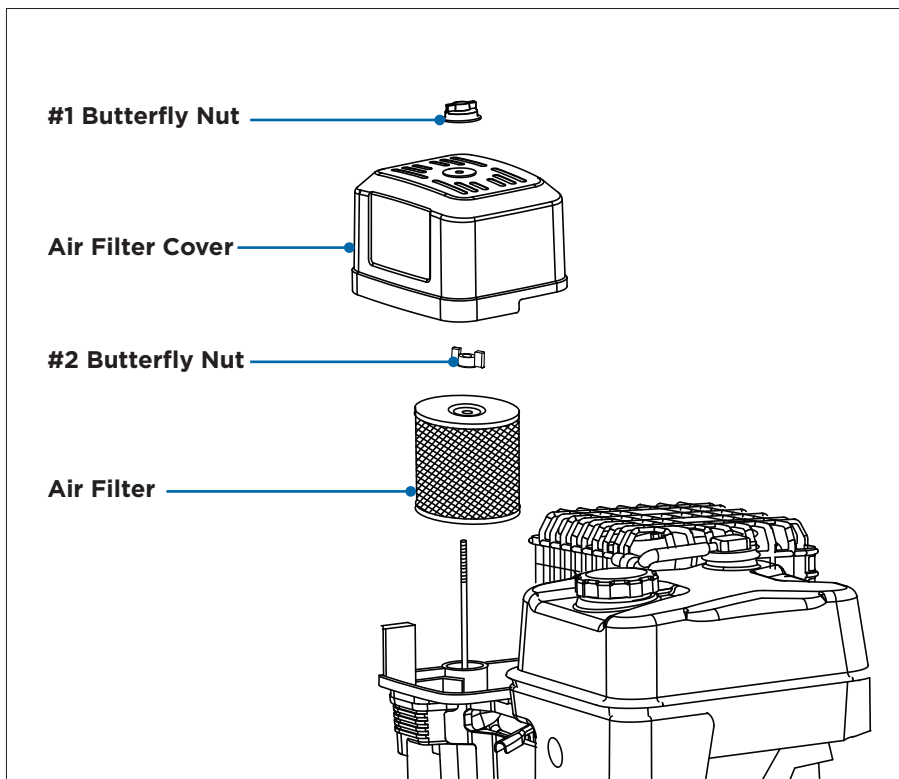
3. Check the gap with a wire gauge. If necessary, reset the gap to 0.7-0.8 mm. Install and tighten the spark plug to the recommended torque: 180 lb-in (20 Nm).
4. Reinstall the spark plug wire and protection cage in reverse order.



**MAINTENANCE**

**NOTE:** In some areas, local law requires using a resistor spark plug to suppress ignition signals. If this engine was originally equipped with a resistor spark plug, use the same type for replacement.



**CHECKING AIR FILTER**

1. Unscrew the butterfly nut by hand and take off the air filter cover.
2. Repeat with the second nut, and pull out the air filter element carefully.
3. Wash it with clean water.
4. Soak the filter in engine oil, and then squeeze the oil out.
5. Place the air filter back and replace the air filter cover.





## SHORT TERM STORING

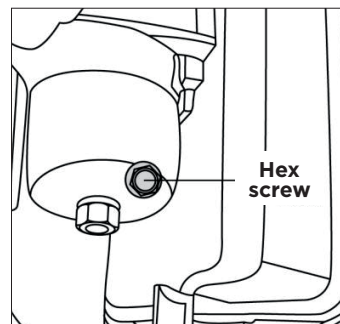
Store idle product out of the reach of children and do not allow persons unfamiliar with the product or these instructions to operate it. This product is dangerous in the hands of untrained users. Cover and store indoors, in a dry, well-ventilated area, such as a tool-shed.

## LONG TERM STORING

Long term storage of the pressure washer requires additional preventive measures to protect it against deterioration.

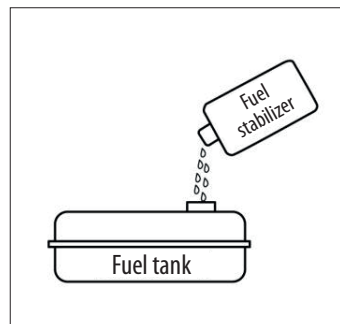
### 1. Drain Fuel

Move the fuel valve to **OFF** position and remove the hex screw from the carburetor. Then, move the fuel valve to **ON** position to drain the fuel from the tank, carburetor, and hose. Screw the carburetor drain hex screw back once the fuel has been completely drained.



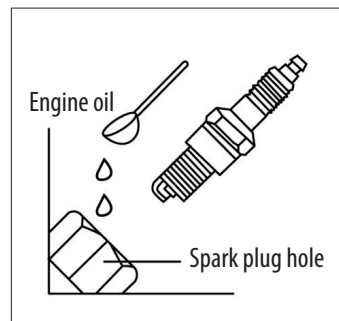
### 2. Add Fuel Stabilizer

If you do not wish to drain the fuel tank, add a fuel stabilizer (38-0907-6) into the fuel tank. Run the engine at least five minutes after adding the stabilizer to distribute it inside the fuel system.



### 3. Drain Oil

- a. Drain the oil (follow the “To Drain the Engine Oil” instructions on page 30).
- b. Remove the spark plug.
- c. Pour one tablespoon of oil through the spark plug hole: type 10W-30.
- d. Slowly pull the starter cord handle until you feel tension, which indicates the piston is on its compression stroke and leave it in this position.
- e. Replace the spark plug.



### IMPORTANT:

If the pressure washer is to be stored with gasoline in the fuel tank and carburetor, it is important to reduce the hazard of gasoline vapour ignition.

Select a well-ventilated storage area away from any appliance that operates with a flame, such as a furnace, water heater, or clothes dryer. Also avoid any area with a spark-producing electric motor, or where power tools are operated.

If possible, avoid storage areas with high humidity, because that promotes rust and corrosion.

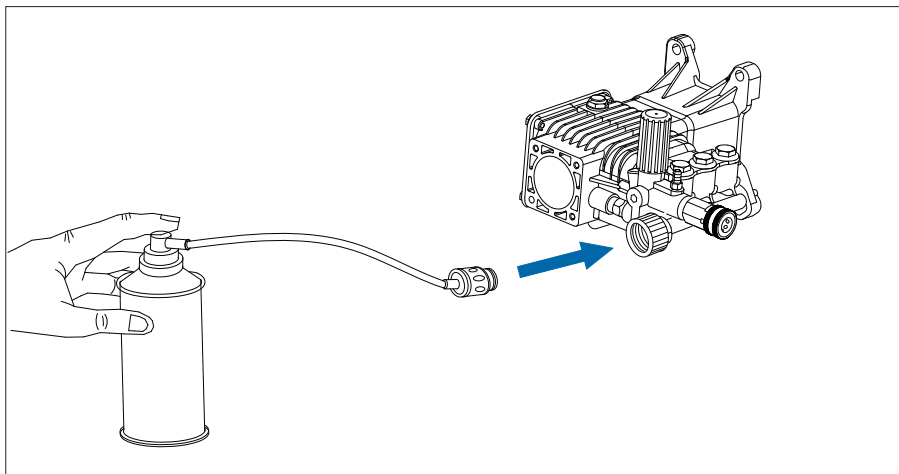
Place the pressure washer on a level surface. Tilting can cause fuel or oil leakage.

Do not use plastic sheets as a dust cover. A non-porous cover will trap moisture around the pressure washer, promoting rust and corrosion.



## WINTERIZING PROCEDURES

Winterizing your pressure washer will help protect and prolong its life. We strongly recommend you to follow the below steps by using Pressure Washer Antifreeze (039-8602-0). This will keep the internal parts lubricated, protected from rust, and prevents the pump from freezing.



1. Connect the pump saver to the inlet adaptor.
2. Depress button on top of the pump saver container.
3. Continue until fluid exits the pressure hose.
4. Remove the hose from pump inlet.



model no. 039-8066-6 (UG02) | contact us 1-888-670-6682

**NOTE:** If your unit still is not functioning properly once you have used this guide please call the MAXIMUM® toll-free service number at 1-888-670-6682. Please do NOT bring the unit back to the store until you have called this number.

## TROUBLESHOOTING ENGINE

PROBLEM	CAUSE	SOLUTION
Engine doesn't start or difficult to start.	No fuel.	Fill the fuel tank with regular gasoline.
	Low oil to damage engine.	Minimum oil should be 1,100 mL to start engine.
	Excess water pressure in pump or hose.	Release water pressure by squeezing trigger on gun.
	Choke lever not in right position.	When cold starting the engine, set the choke to <b>LEFT</b> or <b>OFF</b> . When warm starting, set the choke to <b>RIGHT</b> or <b>ON</b> or try the middle position.
	Clogged carburetor.	Clean the carburetor. Refer to the instruction manual.
	Carbon build-up on spark plug.	Clean the spark plug. Refer to the instruction manual.
Engine stops after starting.	Incorrect starting method.	Use correct starting method. Refer to the instruction manual.
	Low oil or no fuel.	Check oil and fuel levels.
	Choke lever in the <b>LEFT</b> position.	Move the choke lever to the <b>RIGHT</b> position immediately after starting the engine.
Engine lacks of power.	Clogged air filter.	Clean or replace the air filter. Refer to the instruction manual.
	Clogged carburetor.	Clean the carburetor. Refer to the instruction manual.
Carburetor leaks.	Carburetor is clogged.	Clean the carburetor. Refer to the instruction manual.
Starter rope doesn't recoil.	Recoil mechanism is broken.	Call the Toll-free Hotline.
Engine sounds abnormal or overloaded.	Clogged nozzle.	Clean nozzle with tip cleaner.
	Pressure is too high.	Call the Toll-free Hotline.



## TROUBLESHOOTING PUMP

PROBLEM	CAUSE	SOLUTION
No pressure, low pressure.	Nozzle tip not attached.	Attach required nozzle tip.
	Water supply faucet closed.	Turn on faucet. Ensure there are no kinks or blockage in hose.
	Water supply pressure is low.	Ensure faucet is fully opened. Check to make sure water supply is a minimum 30 PSI, 4 GPM.
	Inlet water filter is clogged.	Clean the water filter. Refer to the instruction manual.
	Air in pump.	Squeeze trigger to release the air in pump when the machine is running.
	The loaded RPM is not set to <b>FAST</b> .	Set RPM (Throttle lever) to <b>LEFT</b> position.
	Clogged check valve.	Call the Toll-free Hotline.
Pressure too high.	Damaged pump.	Call the Toll-free Hotline.
	Clogged nozzle.	Clean nozzle with tip cleaner.
Water or oil leaks out of pump.	Damaged seal ring.	Call the Toll-free Hotline.
Cold water keeps draining out of thermal relief valve.	Defective thermal relief valve.	Call the Toll-free Hotline.

model no. 039-8066-6 (UG02) | contact us 1-888-670-6682

## TROUBLESHOOTING ACCESSORIES AND CONNECTIONS

PROBLEM	CAUSE	SOLUTION
No intake of detergent. (For use of on-board detergent injection system)	The detergent siphon tube is not connected.	Connect detergent siphon tube properly. Refer to the instruction manual.
	Damaged detergent siphon tube.	Replace the detergent siphon tube.
	Wrong nozzle.	Use black nozzle when applying detergent. Refer to the instruction manual.
	Clogged nozzle.	Clean nozzle.
	Clogged pump detergent siphon fitting.	Detach the detergent siphon tube and clean the fitting with tip cleaner.
	Detergent is too thick. Clogged detergent filter.	Use only detergent approved for use with pressure washer.
The trigger can't be squeezed.	Safety lock is not open.	Open the safety lock. Refer to the instruction manual.
High Pressure Hose can't be connected to pump or gun.	The O-ring is not lubricated.	Put lubricating oil or water on the O-ring.

**MAXIMUM****39**

### 3-YEAR LIMITED WARRANTY\*

We warrant to the original purchaser (the “Purchaser”) that each MAXIMUM® 4200 PSI Pressure Washer (the “Product”) sold by the Manufacturer will be free, under normal use and service, from defects in materials and workmanship from the date of purchase for the Warranty Period listed below. The Manufacturer’s obligation under this limited warranty is subject to the conditions and limitations described below and limited to the repair or replacement, at the Manufacturer’s option, of any part or parts (with the same model, or one of equal value or specification) which upon examination are found, in the Manufacturer’s judgment, to be defective in material or workmanship.

### WARRANTY PERIOD

PRODUCT PARTS	NON-COMMERCIAL	COMMERCIAL / RENTAL USE
Frame / Body	3 Year	90-Day
Engine	3 Year	90-Day
Pump	3 Year	90-Day
Accessories (incl. gun, hose, wand and tips)	90-Day	30-Day

\* For Accessories and commercial and rental use the Warranty Period is limited as set out above.

Warranties for other MAXIMUM® products may vary.

### WARRANTY LIMITATIONS

**This limited warranty does not apply to defects caused or repairs required:**

- As a result of normal wear and tear, abuse, negligence, accident, lack of maintenance, improper assembly or inappropriate use or operation as outlined in the Instruction Manual and operating instructions or other applicable Product documentation);
- Where the normal use has exhausted the life or a part that by its nature is consumable or peripheral or that has a limited life span and is expected to become inoperative or unusable during the Warranty Period, including the trigger handle, supply hoses, seals, couplers, gaskets, O-rings, pump valve assemblies, valves and pistons;
- As a result of alterations or repairs made or attempted by anyone other than a Service Centre or as a result of the use in or with the Product of parts other than original parts except those installed by a Service Centre; or
- As a result of damage due to freezing, scale build up, thermal expansion, rust, corrosion, failure to maintain adequate ventilation or to the exterior finish such as, but not limited to, scratches, dents, paint chips, discolouring by heat or by abrasive or chemical cleaners.

**WARRANTY**

model no. 039-8066-6 (UG02) | contact us 1-888-670-6682

**This limited warranty will not apply to any:**

- Product that was sold as reconditioned or refurbished product (unless otherwise specified in writing by the Manufacturer or a Manufacturer designated MAXIMUM® authorized retailer);
- Component parts sold by and identified as the product of another company, which shall be covered under that company's own product manufacturer's warranty, if any;
- Any Product subjected to repairs or attempted repairs other than by a Service Centre (which will void the limited warranty);
- Labour charges for inspection or testing where the warranty claim is not found to be valid;
- Product with illegible or without appropriate model and serial number markings; or
- Any Product sold outside of Canada.

**Warranty Conditions**

This limited warranty is non-transferable and may only be exercised by the Purchaser and not by any other person. Proof of purchase must be provided when requesting warranty service. The Purchaser is responsible for all transportation charges in connection with any warranty claim. Any replacement part provided in fulfillment of the warranty obligations is subject to the warranty conditions of the original Product, including the Warranty Period; for the avoidance of doubt, a replacement part or of the Product will not trigger a new Warranty Period.

**Sole Remedy and Limitation of Liability**

The Manufacturer does not make any warranty, representation or promise of quality in respect of the performance of the Product other than those expressly stated in this limited warranty and the 30-Day Satisfaction Guarantee set out herein.

THE LIMITED WARRANTY SET OUT HEREIN IS, EXCEPT FOR PURCHASERS DOMICILED IN QUEBEC, IN LIEU OF, ALL OTHER WARRANTIES OR CONDITIONS, WHETHER EXPRESS, IMPLIED OR STATUTORY, ARISING BY LAW, OUT OF A COURSE OF DEALING OR USAGE OF TRADE OR OTHERWISE, INCLUDING, ANY IMPLIED WARRANTIES OR CONDITIONS OF MERCHANTABILITY, MERCHANTABLE QUALITY, FITNESS OR ADEQUACY FOR A PARTICULAR PURPOSE OR USE, AND/OR NON-INFRINGEMENT AND, EXCEPT TO THE EXTENT PROHIBITED BY APPLICABLE LAW, ALL OTHER SUCH WARRANTIES, ARE EXPRESSLY DISCLAIMED.

Under no circumstances (not applicable to commercial/rental Purchasers domiciled in Quebec to the extent prohibited under Quebec law) shall the retailer or Manufacturer or any Service Centre be liable to the Purchaser or any other Person for (a) indirect, special, punitive, incidental, exemplary, or consequential damages, (b) compensation





for loss of profits, anticipated revenue, savings or goodwill, or other economic loss of the Purchaser, (c) exemplary, aggravated or punitive damages howsoever incurred, (d) contribution or set-off in respect of any claims against the Purchaser, (e) any damages whatsoever relating to third party products or services or the Purchaser's materials, or (f) any damages whatsoever relating to interruption, delays, errors or omissions; in each case under any theory of law or equity, arising out of or in any way related to this limited warranty, even if advised of the possibility thereof, even if the retailer, Manufacturer or Service Centre is aware of or has been advised of the possibility of such damages. The remedies described in this limited warranty constitute complete fulfillment of all obligations and responsibilities of the Manufacturer to the Purchaser with respect to the Product and shall constitute full satisfaction of all claims, whether based on contract, negligence, strict liability or otherwise. Notwithstanding any provision herein or entitlement of the Purchaser at law, in equity or otherwise, in no event shall the liability of the retailer or Manufacturer, or Service Centre whether in contract, tort, product liability or otherwise, exceed, in the aggregate, the amount paid by the Purchaser to the retailer, Manufacturer, or Service Centre, as applicable for the Product. Some provinces may not allow the exclusion or limitation of certain damages, or limits on the duration or voiding of implied warranties or conditions; in such provinces, the exclusions and limits herein may not apply. Any such implied warranties that cannot be disclaimed under applicable law are limited to the lesser of the period prescribed by such applicable law and the Warranty Period. This limited warranty is, except for non-commercial/rental Purchasers domiciled in Quebec, governed by the laws of the Province in Canada in which the Purchaser has purchased the Product. For consumer purchasers domiciled in Quebec this limited warranty is governed by the laws of Quebec.

### **Notice to Consumer**

This warranty gives you specific legal rights, and you may have other rights, which may vary from province to province. The provisions contained in this warranty are not intended to limit, modify, take away from, disclaim or exclude any statutory warranties set forth in any applicable provincial or federal legislation which are not allowed to be disclaimed or waived by us.

### **How to Make a Claim**

To submit a warranty claim or receive support for your Product, please call the MAXIMUM® Customer Care Hotline (1-888-670-6682). The original receipt and/or invoice will be required together with a serial number and a model number when making any warranty claims. We reserve the right to have our Service Centre inspect any Product or part/accessory for defects in workmanship and material prior to honoring any warranty claim. The manufacturer may ask you to send parts, or images for inspection.

**Imported for  
Trileaf Distribution Trifeuil, Toronto, Ont M4S 2B8**

