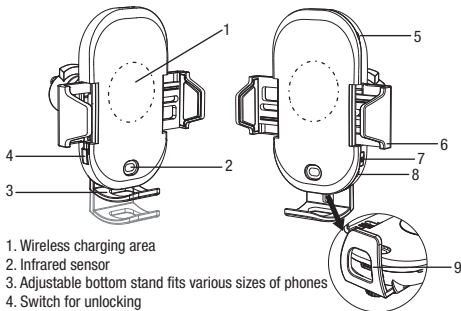




15 W 3-in-1 Wireless Charging Mount User manual

Model No. 035-7329-6

This wireless charging mount that allows you enjoy fast wireless charging easily. Please read the user manual before using and keep it for future reference.



1. Wireless charging area
2. Infrared sensor
3. Adjustable bottom stand fits various sizes of phones
4. Switch for unlocking
5. Wireless charging indicator
6. Extendable arm
7. Power button
8. Power indicator
9. Type-C input

Wireless charging indicator status:

Red: wireless charging standby

Blue: under wireless charging

Light off: fully charged

Power indicator status:

Blue light: normal working

Blue light blink: low battery

Specifications:

Input: DC 12 V 1.67 A, 9 V 1.67 A, 9 V 1.34 A, 5 V 2 A

Output: 15 W/10 W/ 7.5 W/5 W

Frequency: 110–205 kHz

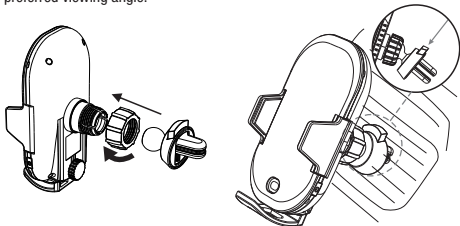
Charge efficiency: $\geq 75\%$

Charging distance: ≤ 6 mm

Installation instructions:

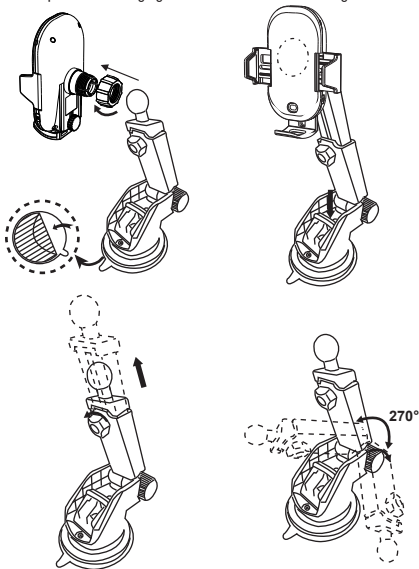
a: Air vent mounting

Loosen the socket on the back of the charging mount. Firmly snap in the ball and tighten the socket. Snap the clamp onto the air vent and adjust to your preferred viewing angle.



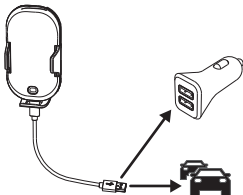
b: Windshield/dashboard mounting

Loosen the socket on the back of the charging mount. Clean the windshield or dashboard where the suction cup will be applied. Peel off the film on the bottom of the stand, push the suction cup firmly against the windshield or dashboard and press the lever down to lock in place. Adjust the angle and telescopic arm of charging mount for comfortable viewing.



Connecting to power supply

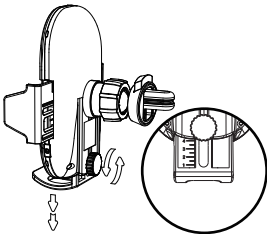
1. Connect USB 2.0 port to the car charger, and Type C USB port to the charging mount.
2. The wireless charging indicator will turn to red, and the power indicator will turn to blue automatically, and enter into standby mode.



Note: To activate fast wireless charging mode, please use QC 2.0/QC 3.0 car charger. You are recommended to use the USB cable featured in product package.

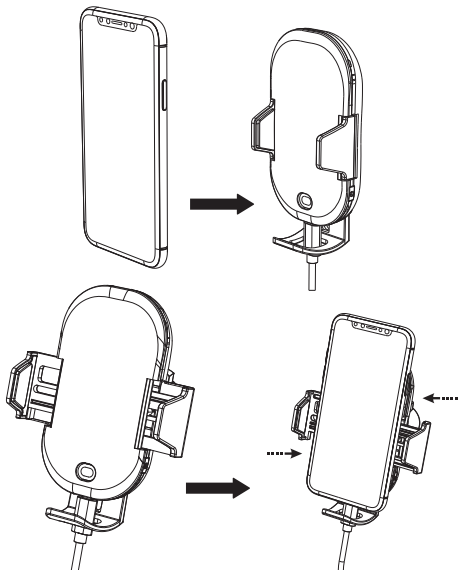
Adjusting the bottom stand

Please adjust the nut to be compatible with more different size phones. Screw the nut to loosen the bottom stand, adjust the bottom stand for different phone, then firm the stand. (Normally the coil is located in the centre of the phone.)

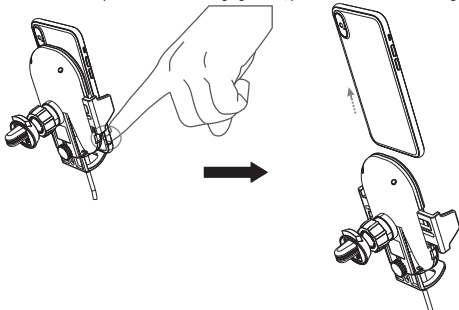


Wireless charging function:

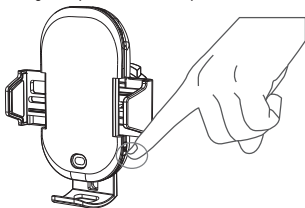
1. Make sure the wireless charging mount is connected to a power supply, and is in standby status.
2. When the phone or other items are close to the infrared sensor, the arms will open automatically and then close automatically after 2 seconds.



3. To remove the phone out of the charging mount, press the switch for unlocking.



4. If the car is stalled or not turned on, you can still open the charging mount as it still contains battery power. the arm still can open and close because it contain battery. Press the power button for 3 seconds to power off to save the built-in battery power. Press the power button again to power on when required.



Note: if the phone case is metal, please remove the phone case before charging. Do not use phone cases thicker than 5 mm (3/16") for wireless charging.

Warning:

1. Do not squeeze or drop the charging mount.
2. Do not disassemble or throw into fire or water to avoid causing short circuit leakage.
3. Do not use wireless charger in hot, humid or corrosive environments to avoid damage.
4. Do not place wireless charger close to magnetic stripe or chip card (ID card, bank card, etc.) to avoid magnetic failure.
5. Please keep the wireless charger at least 20 cm (7 7/8") from the implantable medical devices (heart pacemakers, implantable cochlea, etc.) to avoid potential interference of the medical devices.
6. It is normal for the product to be warm after charging. Charging in high temperatures will reduce the charging efficiency. Charge in cool temperatures.
7. High temperature protection: if the mount is over 60°C (140°F), it will stop charging automatically. The mount would start to charge when the temperature drops to 40°C (104°F).
8. High voltage protection: If the input voltage goes over 13 V, the mount will stop charging.

The 'Qi®' symbol is a trademark of the Wireless Power Consortium.



Product must be recycled or disposed of properly. Dispose of as per the requirements of your local municipality

Made in China

Imported by Trileaf Distribution Toronto, Canada M4S 2B8