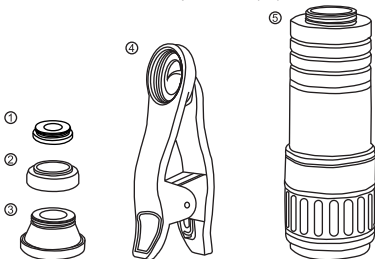




SMARTPHONE CAMERA LENS KIT

Model No. 035-7294-6

Please read this user manual carefully to avoid improper use.



1. 10X Macro lens

This lens makes tiny subjects and living things become larger than life size. Recommended for taking photos of insects, flowers, coins, and jewellery. Detach it from the wide-angle lens if you only need to use the Macro lens.

2. 0.65X Wide-angle lens

This lens broadens the camera angle view to 120°.

Remember the wide-angle lens cannot be used alone, it has to be attached to the macro lens.

If there is a dark corner on the edge, please make sure the clip does not cover the phone camera by adjusting the clip slowly to see whether the shadow disappears or not.

3. 180°Fish eye lens

It achieves extremely wide angles of view by producing images without straight lines, which gives it an appearance like viewing through a fish eye.

4. Smartphone clamp

Clip the lens to phone.

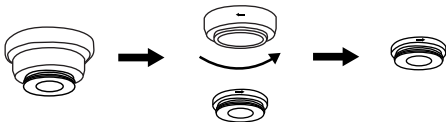
5. 12X70° Telephoto Lens - Plastic

This lens can capture targeted objects within 10 Meters to 400 Meters. Magnification is 12 times.

Package includes:

- 1 – 10X Macro lens
- 1 – 0.65X Wide-angle lens
- 1 – 180° Fish eye lens
- 1 – Smartphone clamp [Wording as used on packaging]
- 1 – 12 X 70° Telephoto Lens - Plastic
- 3 – Lens caps
- 1 – Cleaning cloth

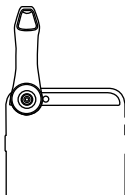
Transformation of Wide-angle lens & Macro lens



1. Fix and hold the top lens with one hand.
2. Screw the macro lens following the arrow with the other hand to separate them or follow the opposite arrow to join them.

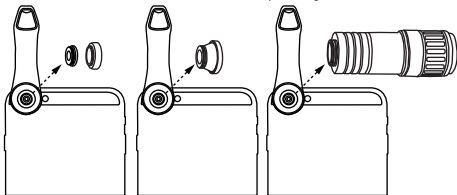
How to use:

1. Attach the clamp to phone as shown.



2. Make sure the clamp is directly over the camera of the phone.

3. Install the lens. Screw the lens to the clamp and tighten the screw.



4. Focus on the object to get a clear picture.

Made in China

Imported by TRILEAF DISTRIBUTION TORONTO, CANADA M4S 2B8