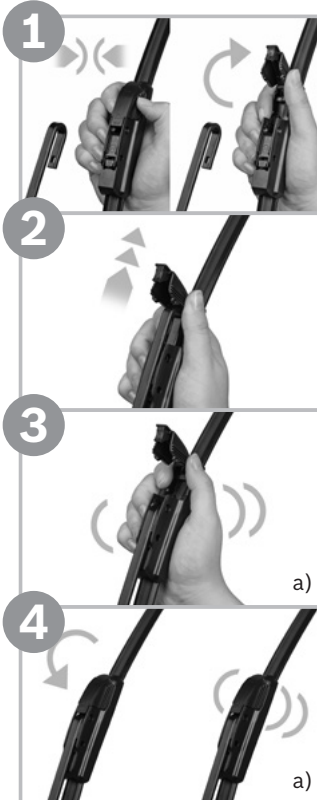


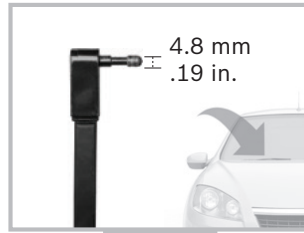
A Identify wiper arm
Identifier le bras d'essuie-glace



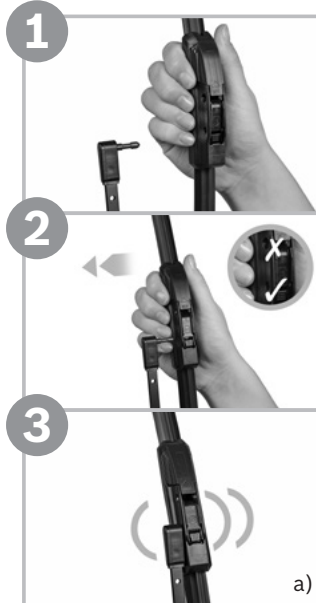
B Install new wiper blade
steps 1-4
Installer le nouveau balai
d'essuie-glace
Étapes 1 à 4



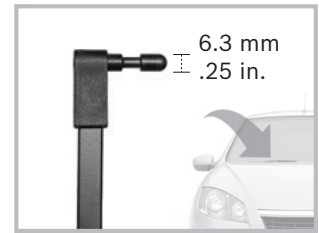
A Identify wiper arm
Identifier le bras d'essuie-glace



B Install new wiper blade
steps 1-3
Installer le nouveau balai
d'essuie-glace
Étapes 1 à 3



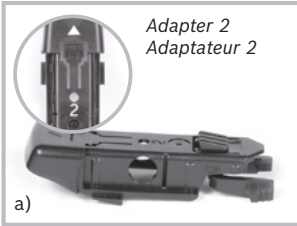
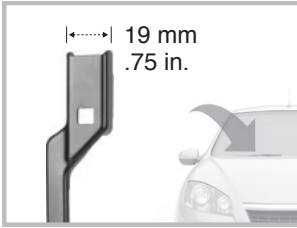
A Identify wiper arm
Identifier le bras d'essuie-glace



B Install new wiper blade
steps 1-4
Installer le nouveau balai
d'essuie-glace
Étapes 1 à 4



A Identify wiper arm
Identifier le bras d'essuie-glace



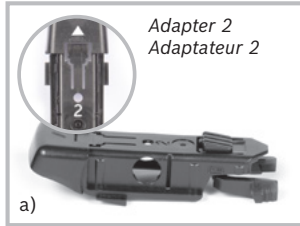
a)

B Install new wiper blade
steps 1-4
Installer le nouveau balai
d'essuie-glace
Étapes 1 à 4



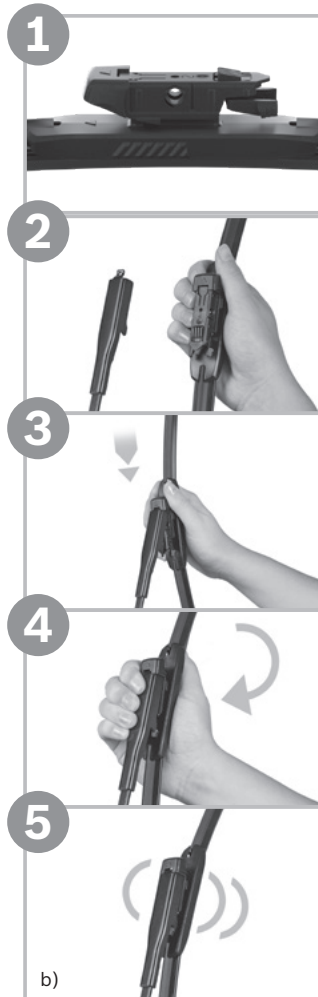
b)

A Identify wiper arm
Identifier le bras d'essuie-glace



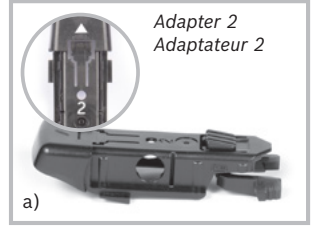
a)

B Install new wiper blade
steps 1-5
Installer le nouveau balai
d'essuie-glace
Étapes 1 à 5



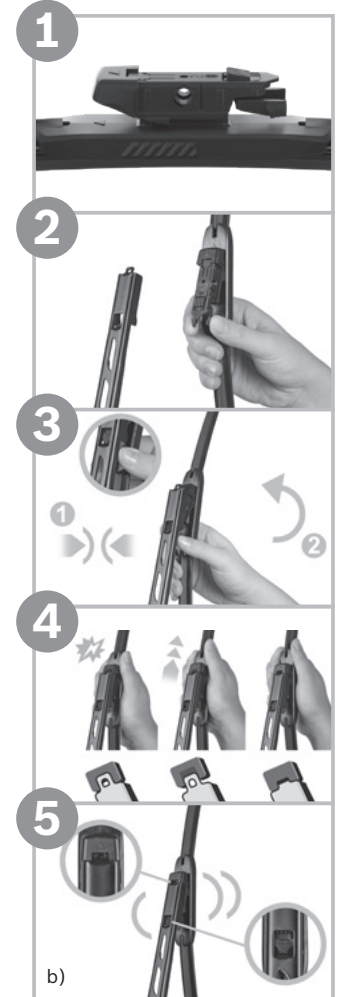
b)

A Identify wiper arm
Identifier le bras d'essuie-glace



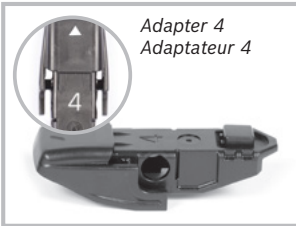
a)

B Install new wiper blade
steps 1-5
Installer le nouveau balai
d'essuie-glace
Étapes 1 à 5

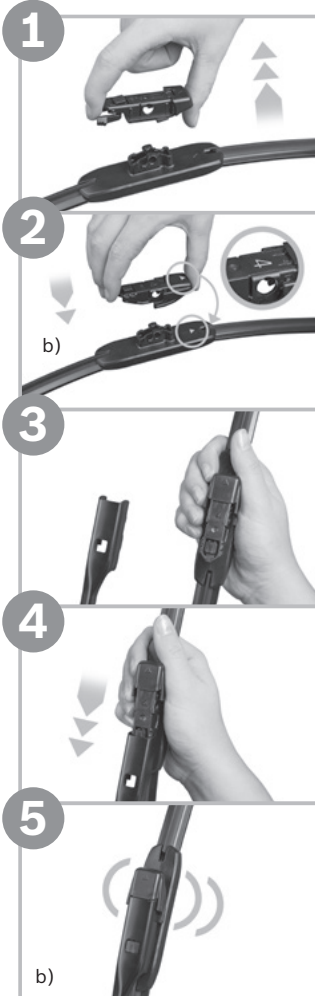


b)

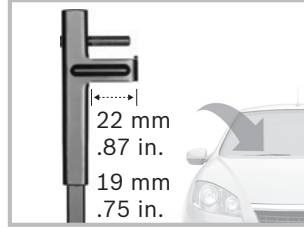
A Identify wiper arm
Identifier le bras d'essuie-glace



B Install new wiper blade
steps 1-5
Installer le nouveau balai
d'essuie-glace
Étapes 1 à 5



A Identify wiper arm
Identifier le bras d'essuie-glace



B Install new wiper blade
steps 1-7
Installer le nouveau balai
d'essuie-glace
Étapes 1 à 7

