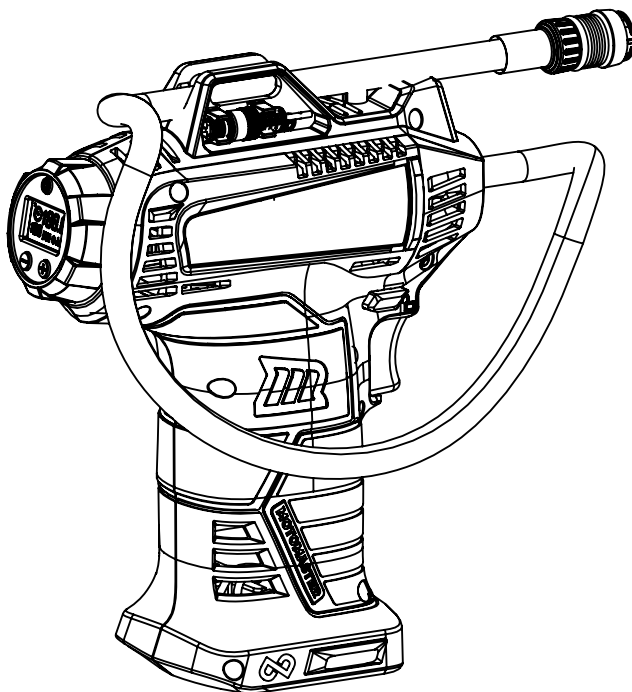




MOTOMASTER 20V PORTABLE TIRE INFLATOR

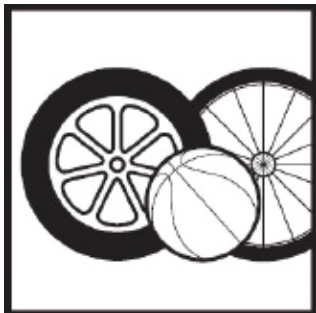


Model no. 009-5222-4

Please read this manual carefully before using this product and save it for future reference.

INSTRUCTION MANUAL

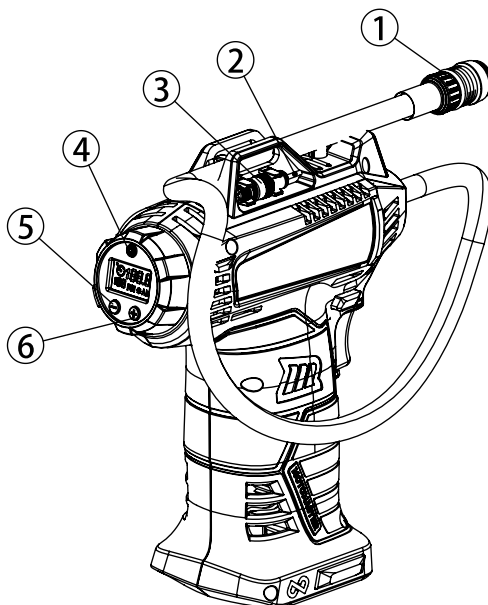
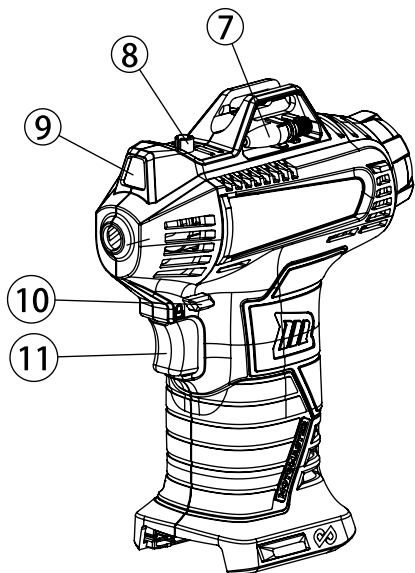
INFLATOR APPLICATIONS



The inflator is ideal for:

- 4x4/SUV car tires
- Motorcycle tires
- Bicycle tires
- Sports balls
- Small inflatable toys

FEATURES



- | | | | |
|---|--------------------------------------|----|--------------------------------|
| 1 | Air hose with patented quick connect | 7 | Pinch valve adaptor |
| 2 | Ball pump needle | 8 | Placeholder for valve stem cap |
| 3 | Presta valve adaptor | 9 | Flashlight |
| 4 | Flashlight button | 10 | Trigger lock button |
| 5 | Decrease pre-set PSI level button | 11 | Start/Stop trigger |
| 6 | Increase pre-set PSI level button | | |

WARNING

Please read this instruction manual carefully. Misuse of the unit may cause property/equipment damage and/or personal injury.

1. Do not inflate products beyond manufacturer's recommendations.
2. Do not overinflate products. Overinflation could cause damage and/or personal injury.
3. Do not leave the inflator unattended while in operation.
4. Allow inflator to cool for 15 minutes after every 10 minutes of continuous use.
5. Do not allow the inflator or its components to be exposed to water sources.
6. Do not allow children to use the inflator.
7. Do not use the inflator other than for its intended use.
8. Do not disassemble or tamper with the inflator.
9. Inspect the inflator before use. If cracked, broken or damaged parts are found, replace the inflator.
10. Never expose inflator to rain, frost, temperatures above 30°C (86°F) or temperatures below -30°C (-22°F).
11. Ensure that the inflator, cords and hoses are not exposed to hot objects, oil or sharp edges.
12. For your own safety, only use accessories and parts included with the inflator.
13. Always use in a safe area, away from traffic and other dangers.
14. Never block the inflating or deflating outlets while operating.
15. Do not touch the chuck, adaptors, air hose immediately after use as they may still be hot.
16. Store indoors, away from water and moisture when not in use.
17. The inflator must be used with specified battery and charger.



OPERATION

This product is equipped with a programmable pre-set digital control and automatic inflator shut-off. The digital control gauge can be used to monitor air pressure when inflating your desired objects and will automatically shut off once the pre-set desired pressure is reached. This product also has a manual inflation mode which requires the trigger to be pressed continuously if the product is in use.

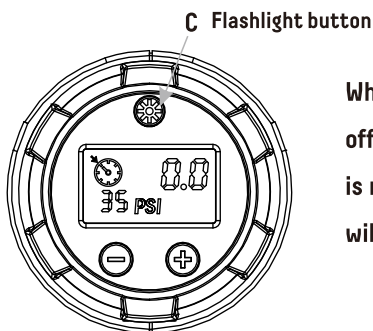
Programmable pre-set digital control

The default mode is automatic mode, and the pre-set pressure is factory set at 0 PSI. When the pre-set pressure is at 0 PSI, the inflator will not shut off automatically. In automatic mode, the inflator will automatically shut off once the desired pressure is reached. In manual mode, please monitor the current pressure and stop the inflator manually by releasing the trigger (in manual mode) once the required pressure is reached.

Using the product

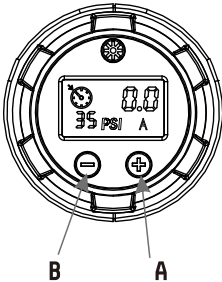
1. Ensure that your vehicle is safely parked, in neutral, and the handbrake is pulled.
2. Install the battery.
3. Press the trigger to turn on the inflator. The digital display will turn on.
4. The inflator will be in automatic mode by default. Change the pre-set pressure (0 PSI on first use) to your desired pressure.
5. Press the trigger again to activate the inflator.
6. The inflator will stop inflating when the desired pressure is reached.
7. To enter manual mode, hold down the trigger after turning the inflator on.
8. The inflator is activated when the trigger is held down and deactivated upon release of the trigger.
9. If the inflator is not activated after 30 seconds of powering on, it will automatically shut off.

Using the flashlight



When the inflator is turned on, the flashlight can be powered on or off manually by pressing the button (see illustration); if the inflator is not activated after 30 seconds of powering on, the flashlight will automatically turn off.

Setting a pre-set pressure (Automatic Mode)



The current pre-set pressure setting is shown on the left side of the LCD screen below the set gauge icon.

1. The pre-set pressure setting can be adjusted by pressing the Increase or Decrease pre-set PSI level buttons '+/-'. Press button '+' to increase the pre-set pressure or press button '-' to decrease the pre-set pressure. Once the desired setting is reached, stop pressing the pre-set buttons.

2. To scroll through PSI values more rapidly, press and hold the pre-set PSI level buttons '+' or '-' and release to stop.

3. In the process of inflating, the pre-set pressure can be adjusted. If the pre-set pressure falls below current pressure, the inflator will stop. The pre-set icon and value will flash for 10 seconds, or until the user changes the pressure using the +/- buttons.



4. The most recent pre-set pressure will be stored after the inflator is powered off. For example, if the pre-set pressure is 35 PSI, the inflator stores the pre-set pressure at 35 PSI for the next use.

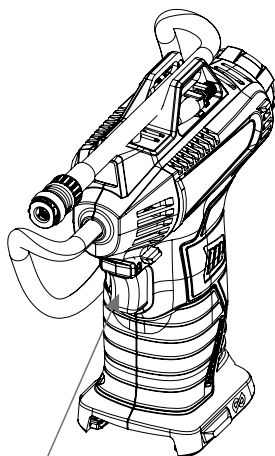
5. Before reaching desired pressure, the inflator can be stopped manually by pressing the Start/Stop trigger.

IMPORTANT

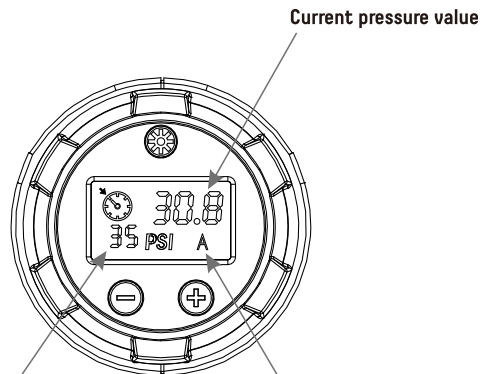
Prior to starting the inflator, always verify the current pre-set pressure setting to prevent overinflation or underinflation.

Inflating (Automatic Mode)

1. Install the battery.
2. Pull back the sliding component on the chuck and push down the open end of the chuck onto the tire's valve stem. Release the sliding component of the chuck to lock it in place and secure the connection (refer to "How to use the patented quick connect chuck").
3. Press the trigger button to turn on the inflator. The digital gauge should show the letter 'A' at the bottom right corner indicating that the unit is in automatic mode.
4. Adjust to your desired pressure (refer to "Setting a pre-set pressure").
5. Press the trigger to begin inflation.
6. When the tire's pressure reaches the pre-set pressure, the inflator will stop automatically. The inflator can also be stopped during inflating by pressing the trigger button again.
7. Remove the quick-connect valve chuck from the tire.



Press the start/stop trigger.
Inflator is in automatic mode.



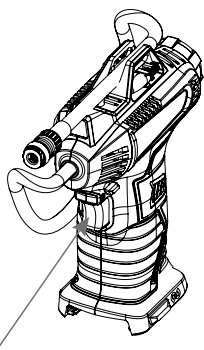
Pre-set pressure value

Automatic mode icon

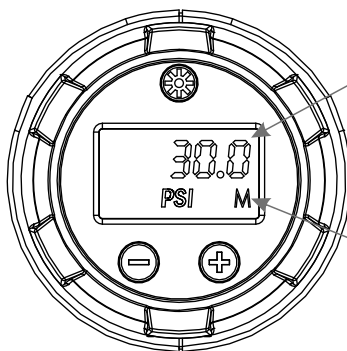
Inflating (Manual Mode)

1. Install the battery.
2. Pull back the sliding component on the chuck and push down the open end of the chuck onto the tire's valve stem. Release the sliding component of the chuck to lock it in place and secure the connection (refer to "How to use the patented quick connect chuck").
3. Press the trigger button to turn on the inflator. The digital gauge should show the letter 'A' at the bottom right corner indicating that the unit is in automatic mode.
4. Long press and hold the trigger to enter manual mode. The digital gauge should show the letter 'M' at the bottom right corner indicating that the unit is in manual mode.
5. Press the trigger to begin inflation.
6. When the tire's pressure reaches the desired pressure, release the trigger to stop inflation.
7. Remove the quick-connect valve chuck from the tire.

NOTE: The inflator will only be able to inflate to a maximum pressure of 120 PSI.



Press the start/stop trigger.
Inflator is in manual mode.



Current pressure value

Manual mode icon

CAUTION

To prevent overheating and damage, allow the inflator to cool for 15 minutes after 10 minutes of continuous operation.

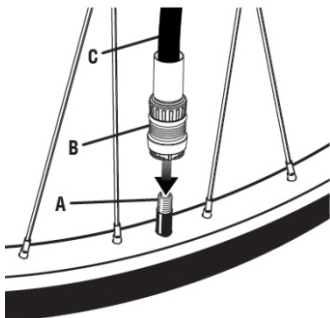
Power off the inflator

If the inflator is not activated after 30 seconds of powering on, it will automatically shut off, turning both the inflator and flashlight off.

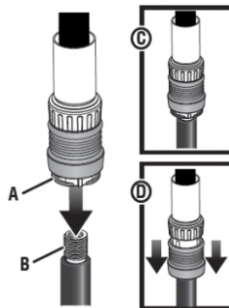
Trigger lock button

When the product is not in use, engage the trigger lock button to disable the trigger, preventing accidental power on. To enable the trigger to power on the product, disengage the trigger lock button.

How to use the patented quick connect chuck



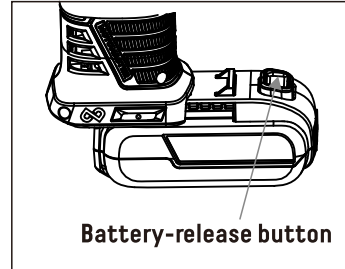
- A - Valve stem
- B - Air chuck
- C - Air hose



- A - Air chuck
- B - Valve stem
- C - Push chuck onto valve stem
- D - Slide sleeve down to lock in place

ATTACH THE BATTERY PACK

1. Align the raised rib on the battery pack with the grooves on the bottom of the tool, then slide the battery pack onto the tool.
2. Ensure that the battery-release button on the battery pack snaps into place and the battery pack is secured to the tool before beginning operation.



REMOVE THE BATTERY PACK

1. Press the battery-release button to release the battery pack.
2. Pull the battery pack out to remove it from the tool.

STORAGE

Return all accessories to their designated compartments.

Ensure all tires have valve stem caps (if applicable).

Wipe clean with a damp cloth to help maintain the inflator's appearance.

WARNING

Allow air compressor to cool for 15 minutes after 10 minutes of continuous operation. Maximum Duty Cycle: 40% at 35 PSI. Do not touch the metal valve chuck, adaptors, or air hose immediately after use as they may be hot. Allow the unit to cool to room temperature before handling.

RISK OF EXPLOSION

Do not overinflate objects.

Overinflation could cause damage and/or personal injury.

RISK OF INJURY

Do not direct air stream at the body.

Do not leave inflator unattended when in use.

TECHNICAL SPECIFICATIONS

SKU#: 009-5222-4

Operating Voltage: 20V DC max*

Max. Pressure: 120 PSI

Duty Cycle: 10 minutes on, 15 minutes off

Accessories: 1 pc Presta valve adaptor, 1 pc pinch valve adaptor and 1 pc ball needle

*Maximum battery voltage without workload; with workload, nominal voltage is 18V

ENVIRONMENTAL PROTECTION



Do not dispose of this product in household garbage at the end of its life cycle. Only dispose of this product at designated collection points for recycling of electrical and/or electronic appliances.

This Class B digital apparatus complies with Canadian CAN ICES-3(B)/NMB-3(B).

Made in China

Imported by MotoMaster Canada Toronto,
Canada M4S 2B8

This MotoMaster product carries a one (1) year warranty against defects in workmanship and materials. This product is not guaranteed against wear, breakage or misuse. Should this product become defective within the stated warranty period, return it to the store with proof of purchase, and it will be replaced or repaired free of charge.

